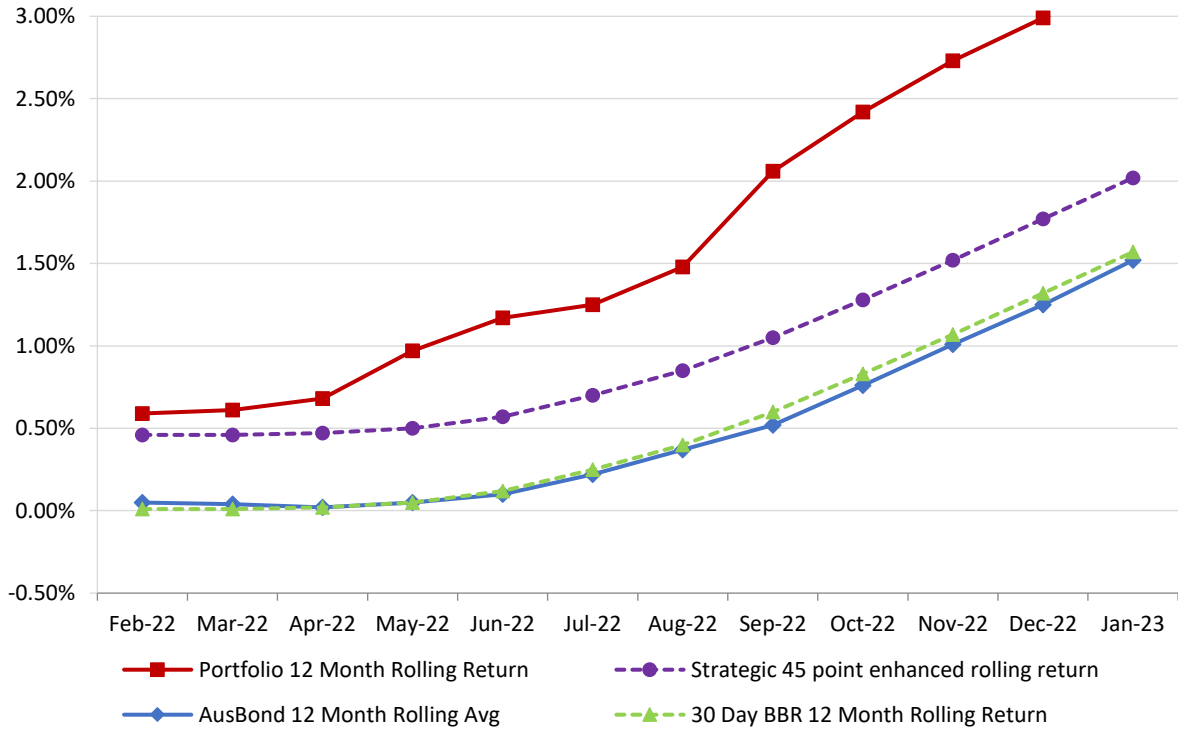


# **Attachment B**

**Investment Performance  
as at 31 January 2023**

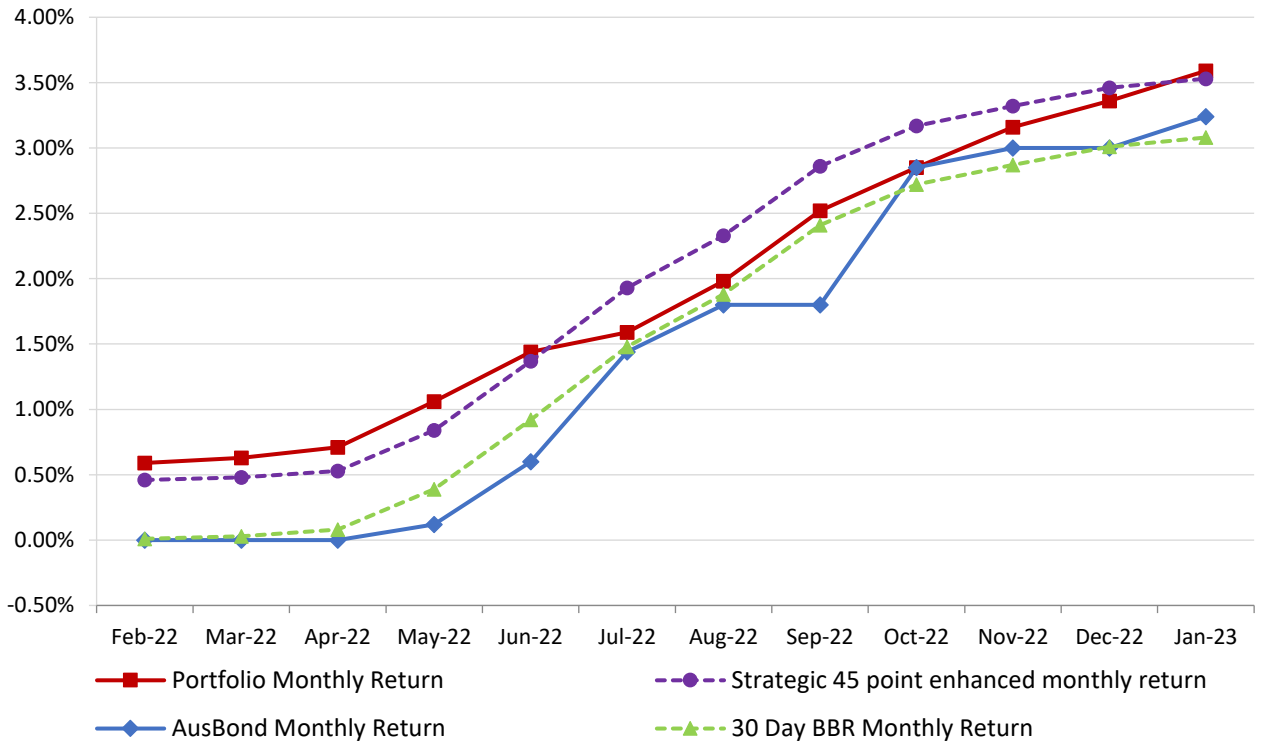
## 12 Month Rolling Averages

Actual Portfolio vs Strategic Enhanced Benchmark vs AusBond Benchmark vs 30 Day BBR Benchmark  
January 2023

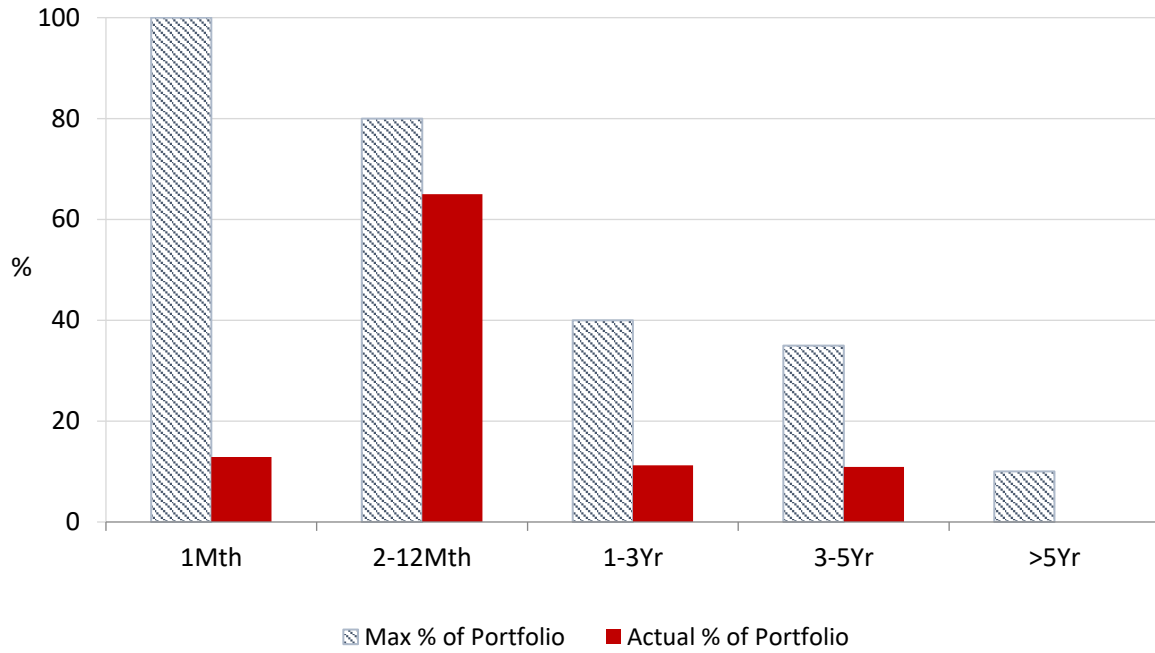


## Monthly Results

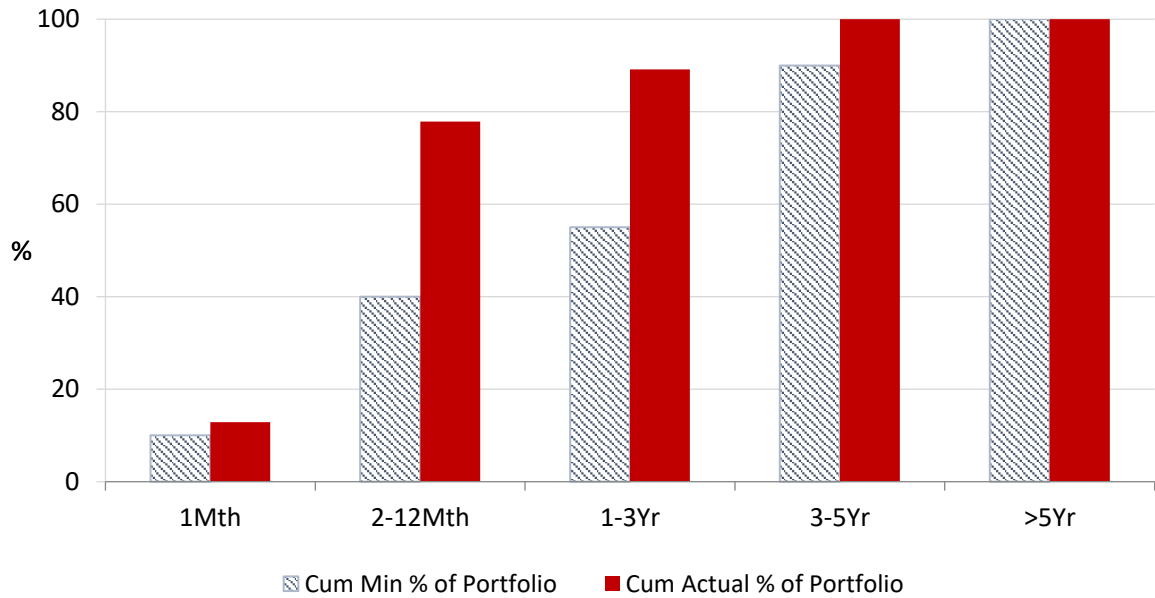
Actual Portfolio vs Strategic Enhanced Benchmark vs AusBond Benchmark vs 30 Day BBR Benchmark  
January 2023



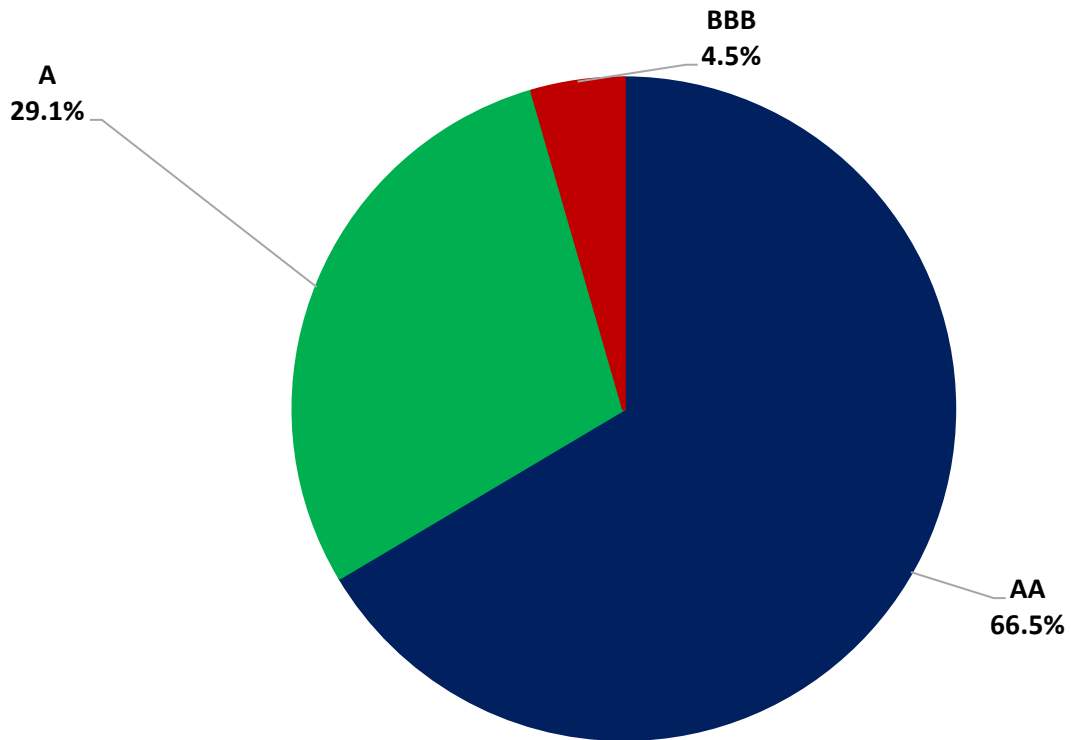
**Portfolio Liquidity - Maximum Allowances as at 31 January 2023**



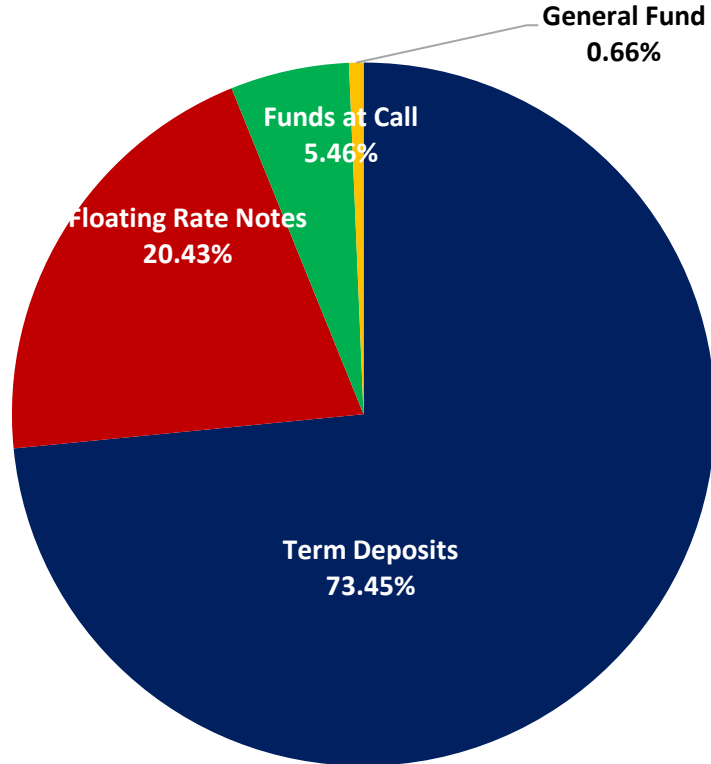
**Portfolio Liquidity - Minimum Allocations as at 31 January 2023**



**Risk Profile as at 31 January 2023**



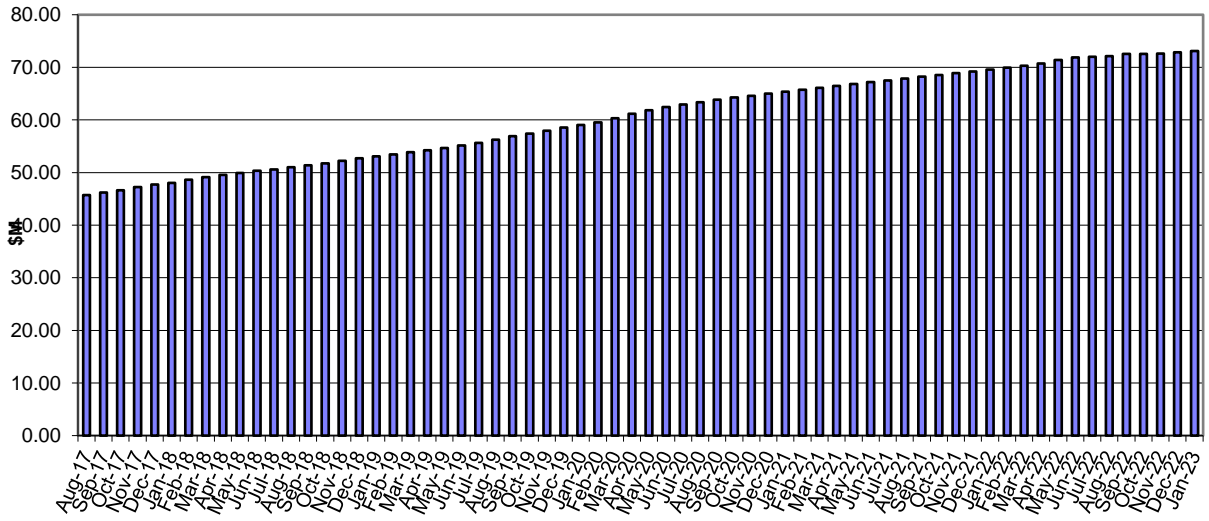
**Risk Profile as at 31 January 2023**



**INVESTMENT AND CASH DISTRIBUTION BY FINANCIAL INSTITUTION**  
as at 31 January 2023

| Institution Category  | Financial Institution                                 | Amount<br>\$M | Financial<br>Inst.<br>% | Institution<br>Cat.<br>% |
|---|---|---------------|-------------------------|--------------------------|
| Australian Big 4 Bank<br>(and related institutions)                             | ANZ Bank  | 37.0          | 5.3                     |                          |
|   | Commonwealth Bank                                     | 224.7         | 32.4                    |                          |
|   | National Aust Bank                                    | 48.9          | 7.0                     |                          |
|   | Westpac Banking Corporation                           | 141.5         | 20.4                    |                          |
| <b>Big 4 Total</b>  |   | <b>452.1</b>  |                         | <b>65.1</b>              |
| Other Australian ADIs<br>and Australian subsidiaries<br>of foreign institutions | Bank Australia Limited                                | 10.0          | 1.4                     |                          |
|   | Bank of Queensland                                    | 52.0          | 7.5                     |                          |
|   | Bendigo & Adelaide Bank                               | 40.0          | 5.8                     |                          |
|   | Great Southern Bank (formerly Credit Union Australia) | 6.8           | 1.0                     |                          |
|   | ING Bank  | 50.0          | 7.2                     |                          |
|   | Suncorp Bank  | 61.3          | 8.8                     |                          |
|   | Macquarie Bank Ltd                                    | 10.0          | 1.4                     |                          |
|   | Northern Territory Treasury Corporation               | 5.0           | 0.7                     |                          |
| Newcastle Permanent Building Society  | 7.3   | 1.0           |                         |                          |
| <b>Other ADI Total</b>  |   | <b>242.3</b>  |                         | <b>34.9</b>              |
| <b>Grand Total</b>  |   | <b>694.4</b>  | <b>100.0</b>            | <b>100.0</b>             |

### Cumulative Outperformance over AusBond Benchmark - 2016-2022



### Cumulative Outperformance over 30 Day BBR Benchmark - 2016-2022

